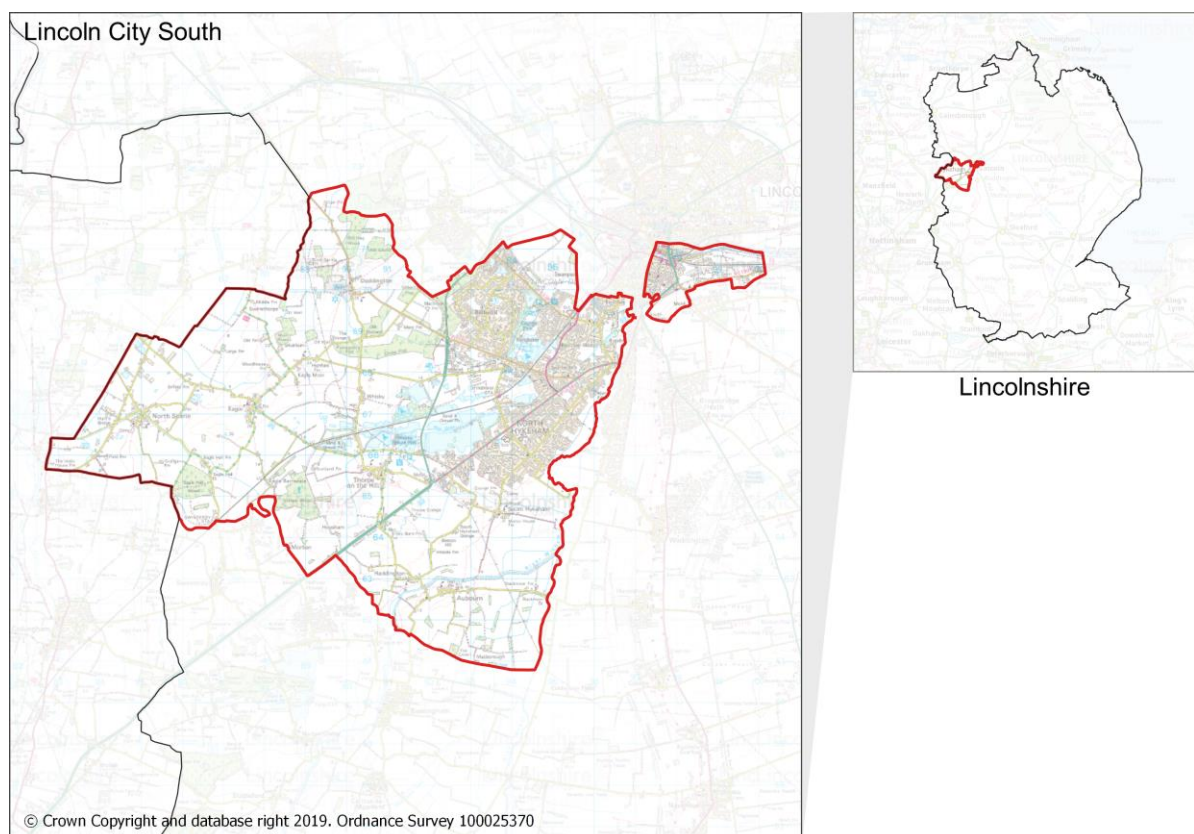


# **Lincoln City South Neighbourhood Team 2019-20 Profile**

# Contents

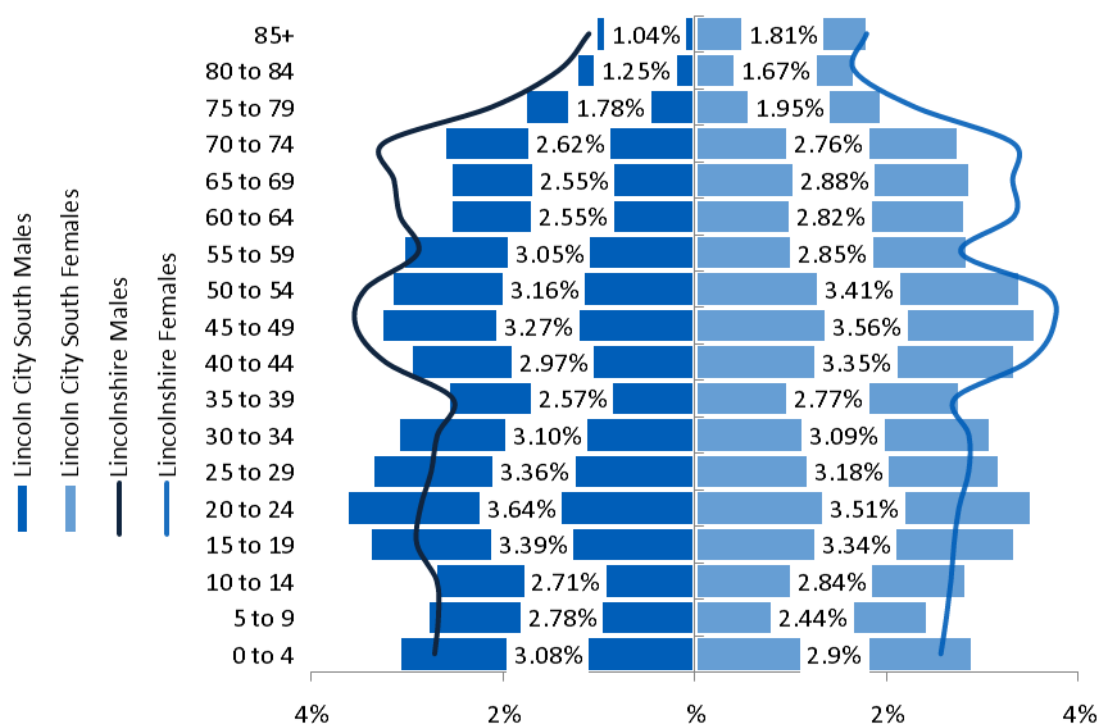
Contents.....	2
Geography .....	2
Population and demographics .....	3
Disease Prevalence .....	4
Lincoln City South Burden of Disease .....	5
A&E Attendance.....	6
Hospital Admissions .....	7
Deaths.....	8
Sources.....	8

## Geography



# Population and demographics

Lincoln City South neighbourhood team is made up of 6 GP practices (Birchwood Medical Practice, Boultham Park Medical Practice, Newark Road Surgery, Portland Medical Practice, Richmond Medical Centre and The Woodland Medical Practice). In 2018-19 there were 57,601 patients registered to the Lincoln City South neighbourhood team covering an area of 35 lower super output areas (LSOA)



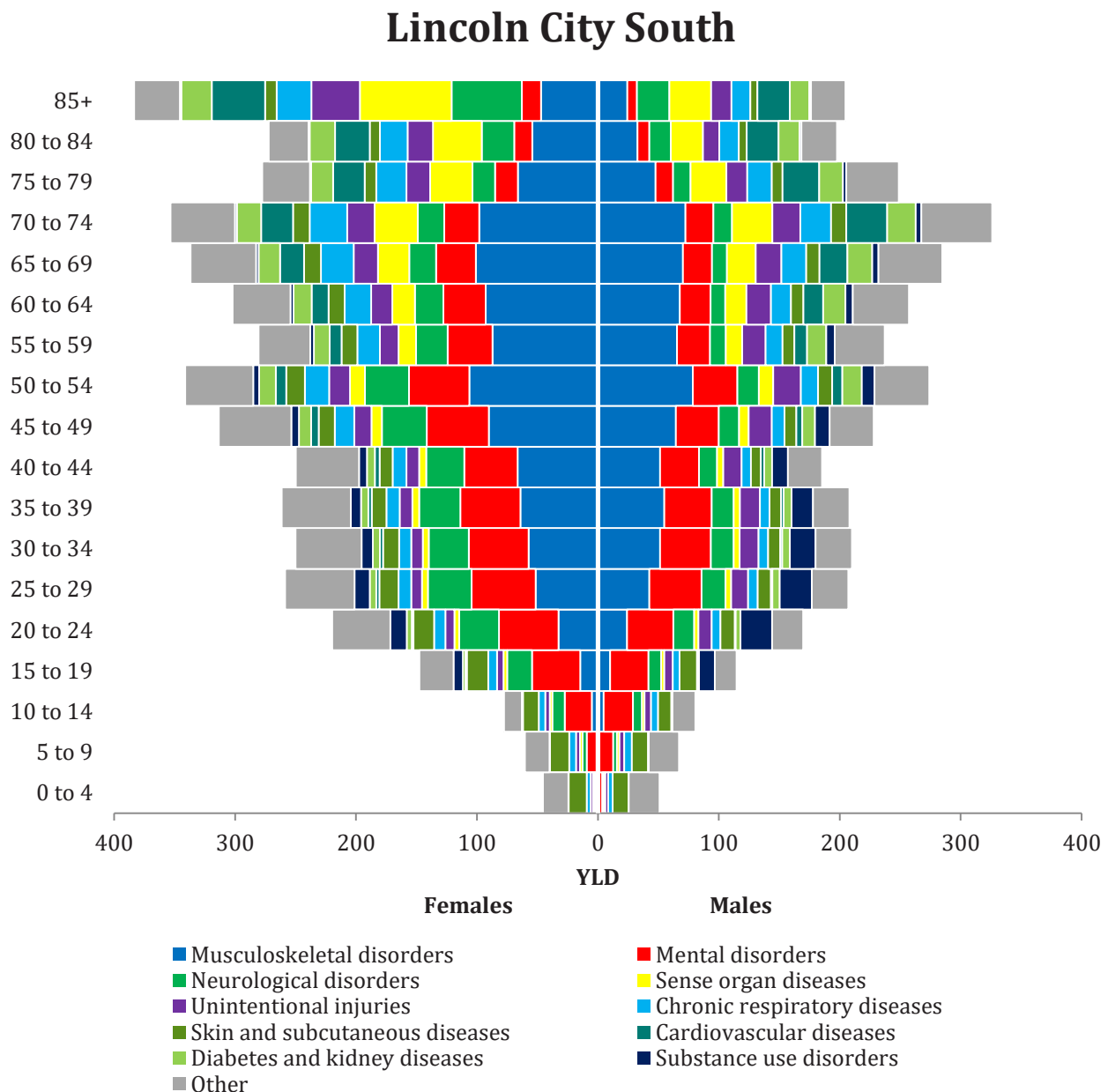
# Disease Prevalence

Using the Quality and Outcome Framework (QOF) register, we can identify the number of people on each disease register at their GP.

Disease	Lincoln City South	England
Atrial Fibrillation	1,146 (1.99%)	1.98%
Coronary Heart Disease	2,044 (3.55%)	3.10%
Cardiovascular Disease PP	394 (1.22%)	1.14%
Heart Failure	599 (1.04%)	0.93%
Hypertension	8,249 (14.32%)	13.96%
Peripheral Artery Disease	365 (0.63%)	0.60%
Stroke and Transient Ischaemic Attack	1,102 (1.91%)	1.77%
Asthma	3,480 (6.04%)	6.05%
COPD	1,218 (2.11%)	1.93%
Obesity	5,783 (12.56%)	10.12%
Cancer	1,775 (3.08%)	2.98%
Chronic Kidney Disease	3,061 (6.65%)	4.09%
Diabetes	3,331 (7.15%)	6.93%
Palliative Care	282 (0.49%)	0.40%
Dementia	512 (0.89%)	0.78%
Depression	6,590 (14.31%)	10.74%
Epilepsy	403 (0.88%)	0.79%
Learning Difficulties	417 (0.72%)	0.50%
Mental Health	615 (1.07%)	0.96%
Osteoporosis	114 (0.55%)	0.79%
Rheumatoid Arthritis	322 (0.71%)	0.76%

# Lincoln City South Burden of Disease

Using the Lincolnshire Burden of Disease this is the modelled profile of the Lincoln City South neighbourhood team Burden of Disease. Years lived with disability (YLD) are defined as years of life lived with any short-term or long-term health loss. (IHME 2017). In the Lincoln City South neighbourhood team the biggest driver of years lived with disability is musculoskeletal conditions.



## A&E Attendance

In 2018/19 there were 15,020 attendances in an A&E department attributed to the Lincoln City South neighbourhood team. Just fewer than 45% of attendances ended up with the attendee being discharged with no follow up treatment required, however just under 25% of attendances resulted in an admission to a hospital bed.

Disposal Outcome	Lincoln City South	Lincolnshire
Discharged – did not require any follow-up treatment	44.73%	37.91%
Admitted to hospital bed	24.25%	21.55%
Discharged – follow-up treatment to be provided by general practitioner	11.88%	21.10%
Referred to fracture clinic	7.43%	5.55%
Left department before being treated	6.09%	2.93%
Referred to other outpatient clinic	2.38%	2.50%
Transferred to other healthcare provider	1.19%	1.64%
Referred to other healthcare professional	0.94%	1.38%
Not known	0.40%	0.55%
Other	0.25%	0.92%
Died in department	0.22%	0.13%
Referred to A&E clinic	0.21%	3.75%
Left department having refused treatment	0.03%	0.07%
<b>Grand Total</b>	<b>100.00%</b>	<b>100.00%</b>

The following heat chart show the most common combinations of attendee age, and attendee arrival time at A&E for the Lincoln City South neighbourhood team. Most attendances were seen between 08:00 and 20:00 and the most likely age groups to attend being 0-4 years and 85+

	0-4	5-9	10-14	15-19	20-24	25-29	30-34	35-39	40-44	45-49	50-54	55-59	60-64	65-69	70-74	75-79	80-84	85+	Grand Total
00:00-00:59	0.29%	0.07%	0.05%	0.21%	0.25%	0.23%	0.18%	0.10%	0.14%	0.17%	0.12%	0.13%	0.08%	0.09%	0.05%	0.12%	0.06%	0.17%	2.50%
01:00-01:59	0.15%	0.03%	0.03%	0.19%	0.21%	0.27%	0.13%	0.13%	0.10%	0.11%	0.15%	0.11%	0.07%	0.04%	0.05%	0.05%	0.03%	0.11%	1.98%
02:00-02:59	0.16%	0.03%	0.03%	0.08%	0.20%	0.19%	0.13%	0.09%	0.09%	0.10%	0.09%	0.11%	0.03%	0.03%	0.09%	0.09%	0.07%	0.10%	1.70%
03:00-03:59	0.07%	0.02%	0.00%	0.11%	0.20%	0.13%	0.07%	0.08%	0.06%	0.05%	0.07%	0.09%	0.03%	0.05%	0.07%	0.06%	0.09%	0.13%	1.38%
04:00-04:59	0.09%	0.02%	0.01%	0.11%	0.10%	0.17%	0.07%	0.09%	0.05%	0.07%	0.11%	0.11%	0.05%	0.13%	0.06%	0.12%	0.06%	0.19%	1.60%
05:00-05:59	0.12%	0.01%	0.01%	0.10%	0.11%	0.07%	0.09%	0.10%	0.07%	0.12%	0.09%	0.11%	0.07%	0.05%	0.11%	0.08%	0.09%	0.17%	1.56%
06:00-06:59	0.06%	0.03%	0.03%	0.07%	0.09%	0.11%	0.14%	0.07%	0.06%	0.11%	0.15%	0.15%	0.12%	0.11%	0.15%	0.08%	0.07%	0.21%	1.80%
07:00-07:59	0.18%	0.01%	0.01%	0.05%	0.12%	0.18%	0.15%	0.15%	0.17%	0.11%	0.16%	0.24%	0.10%	0.10%	0.15%	0.10%	0.08%	0.15%	2.22%
08:00-08:59	0.15%	0.14%	0.15%	0.15%	0.15%	0.25%	0.27%	0.29%	0.21%	0.16%	0.25%	0.23%	0.16%	0.25%	0.22%	0.15%	0.13%	0.22%	3.52%
09:00-09:59	0.31%	0.25%	0.44%	0.25%	0.21%	0.35%	0.41%	0.37%	0.26%	0.29%	0.34%	0.36%	0.24%	0.22%	0.38%	0.23%	0.31%	0.37%	5.59%
10:00-10:59	0.37%	0.16%	0.31%	0.29%	0.31%	0.40%	0.42%	0.35%	0.38%	0.39%	0.33%	0.37%	0.31%	0.40%	0.39%	0.32%	0.29%	0.43%	6.20%
11:00-11:59	0.45%	0.21%	0.30%	0.33%	0.37%	0.46%	0.42%	0.39%	0.33%	0.35%	0.48%	0.44%	0.29%	0.46%	0.35%	0.32%	0.36%	0.47%	6.75%
12:00-12:59	0.37%	0.11%	0.36%	0.25%	0.43%	0.41%	0.45%	0.37%	0.30%	0.28%	0.42%	0.31%	0.30%	0.35%	0.31%	0.28%	0.21%	0.41%	5.90%
13:00-13:59	0.35%	0.21%	0.34%	0.29%	0.37%	0.41%	0.42%	0.33%	0.29%	0.22%	0.33%	0.29%	0.24%	0.24%	0.27%	0.29%	0.33%	0.37%	5.58%
14:00-14:59	0.33%	0.25%	0.31%	0.40%	0.27%	0.41%	0.39%	0.33%	0.24%	0.23%	0.28%	0.26%	0.28%	0.21%	0.31%	0.33%	0.25%	0.37%	5.43%
15:00-15:59	0.43%	0.21%	0.36%	0.23%	0.43%	0.43%	0.29%	0.29%	0.26%	0.28%	0.30%	0.36%	0.27%	0.25%	0.33%	0.27%	0.17%	0.35%	5.51%
16:00-16:59	0.39%	0.25%	0.41%	0.33%	0.43%	0.47%	0.27%	0.37%	0.30%	0.28%	0.37%	0.31%	0.19%	0.16%	0.31%	0.23%	0.22%	0.41%	5.71%
17:00-17:59	0.49%	0.29%	0.29%	0.34%	0.43%	0.48%	0.40%	0.26%	0.27%	0.32%	0.27%	0.31%	0.19%	0.19%	0.31%	0.29%	0.23%	0.44%	5.78%
18:00-18:59	0.74%	0.42%	0.33%	0.34%	0.37%	0.56%	0.44%	0.37%	0.34%	0.32%	0.33%	0.35%	0.18%	0.21%	0.27%	0.27%	0.23%	0.38%	6.42%
19:00-19:59	0.60%	0.31%	0.39%	0.33%	0.33%	0.43%	0.48%	0.25%	0.27%	0.28%	0.37%	0.36%	0.18%	0.17%	0.28%	0.17%	0.19%	0.31%	5.67%
20:00-20:59	0.58%	0.22%	0.25%	0.44%	0.41%	0.53%	0.31%	0.35%	0.23%	0.29%	0.25%	0.27%	0.19%	0.17%	0.18%	0.17%	0.15%	0.39%	5.39%
21:00-21:59	0.54%	0.19%	0.31%	0.37%	0.39%	0.39%	0.34%	0.28%	0.24%	0.23%	0.13%	0.22%	0.15%	0.13%	0.17%	0.08%	0.15%	0.27%	4.55%
22:00-22:59	0.39%	0.14%	0.16%	0.31%	0.33%	0.41%	0.23%	0.29%	0.15%	0.18%	0.17%	0.19%	0.08%	0.13%	0.13%	0.11%	0.13%	0.25%	3.78%
23:00-23:59	0.44%	0.11%	0.13%	0.30%	0.25%	0.29%	0.23%	0.23%	0.19%	0.17%	0.27%	0.15%	0.09%	0.13%	0.15%	0.07%	0.15%	0.17%	3.48%
Grand Total	8.05%	3.69%	4.98%	5.88%	6.73%	8.00%	6.74%	5.91%	5.00%	5.10%	5.83%	5.83%	3.87%	4.24%	5.08%	4.27%	4.02%	6.81%	100.00%

When looking into the reasons for attendances at A&E for the Lincoln City South neighbourhood team in 2018/19, gained from the coding in Hospital Episode Statistics found that 16.8% of all attendances were either classed as "disease not classifiable" or "blank"

When removing these, the top ten reasons for attendances were:

Classification	Attendances
Dislocation/fracture/joint injury/amputation	8.44%
Contusion/abrasion	8.40%
Sprain/ligament injury	7.41%
Nothing abnormal detected	7.20%
Respiratory conditions - other non-asthma	6.24%
Laceration	5.57%
Cardiac conditions - other non-ischaemia	5.34%
Gastrointestinal conditions	5.03%
Urological conditions (inc cystitis)	4.25%
Head injury	3.13%

## Hospital Admissions

In 2018/19 there were 15,820 admissions into hospital for people registered to the Lincoln City South neighbourhood team. 8,807 admissions (55.7%) were elective compared to 7,013 being emergency (44.3%).

The top 5 hospital provider admissions in the Lincoln City South neighbourhood team are:

Hospital	Attendances
United Lincolnshire Hospital Trust	84.57%
Nottingham University Hospital Trust	4.07%
BMI The Lincoln Hospital	1.48%
Sherwood Forest Hospitals NHS Foundation Trust	1.37%
University Hospital Leicester NHS Trust	0.91%

## Deaths

During 2018-19 there were 595 deaths in people registered to the Lincoln City South neighbourhood team.

The following table shows the breakdown of where each death took place

Place of deaths	Lincoln City South	Lincolnshire
Hospital	36.97%	36.14%
Care Home	32.61%	26.34%
Home	25.38%	31.50%
Hospice	5.04%	5.46%
Other communal establishments	0.00%	0.54%
<b>Grand Total</b>	<b>100.00%</b>	<b>100.00%</b>

The most occurring underlying causes of death were Ischaemic heart disease (9.75%), dementia (8.91%), lung Cancer (6.72%), cerebrovascular diseases (6.72%) and other heart diseases (6.39%).

## Sources

*ONS mid-year population Estimates (2018)*

<https://www.ons.gov.uk/peoplepopulationandcommunity/populationandmigration/populationestimates/bulletins/annualmidyearpopulationestimates/mid2018>

*Quality and Outcomes Framework (2018/19), NHS Digital*

<https://digital.nhs.uk/data-and-information/publications/statistical/quality-and-outcomes-framework-achievement-prevalence-and-exceptions-data/2018-19-pas>

*Global Burden of disease (2017)*

<https://vizhub.healthdata.org/gbd-compare/>

*NHS Digital (2019), Births – Civil Registration– non-publically available*

*NHS Digital (2019), Primary Care Mortality Data – Civil Registration– non-publically available*

*Hospital Episode Statistics (HES) Copyright © 2019, Re-used with the permission of The Health and Social Care Information Centre. All rights reserved – non-publically available*